

# TRUVOX<sup>TM</sup>

INTERNATIONAL  
A TACONY COMPANY

USER MANUAL            EN  
MANUEL D'UTILISATION    FR  
GEBRAUCHSANLEITUNG    DE



The solution tank is designed to fit conveniently onto the handle of the Orbis machines, in accordance with the following instructions.



**WARNING – Always ensure machine is unplugged before fitting or removing parts**

Le réservoir de solution est destiné à être placé facilement sur la poignée de les machines Orbis, conformément aux instructions données ci-après.



**AVERTISSEMENT – s'assurer toujours que la machine est mise hors tension avant de retirer ou de monter des pièces**

Der Loseungstank wurde so entwickelt, dass er optimal an den Griffen aller Maschinen angebracht werden kann. Dabei sollten die folgenden Anweisungen beachtet werden.



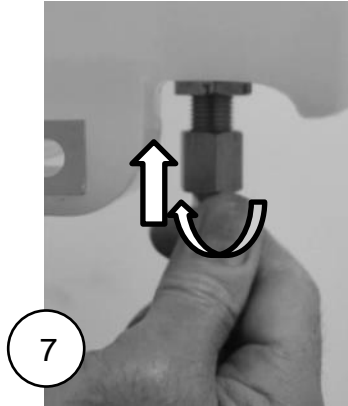
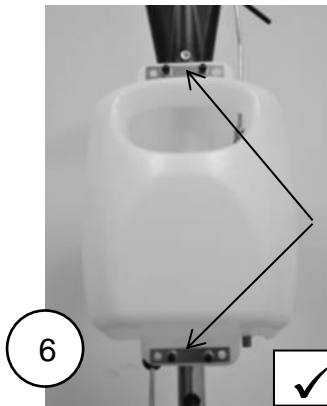
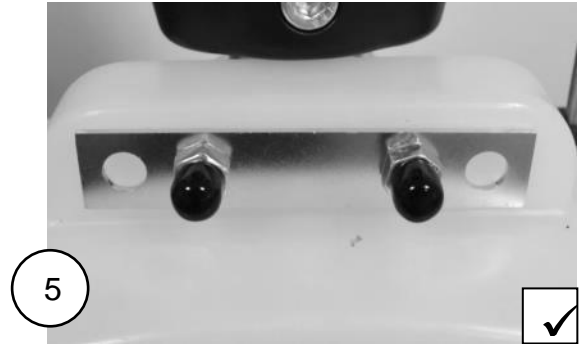
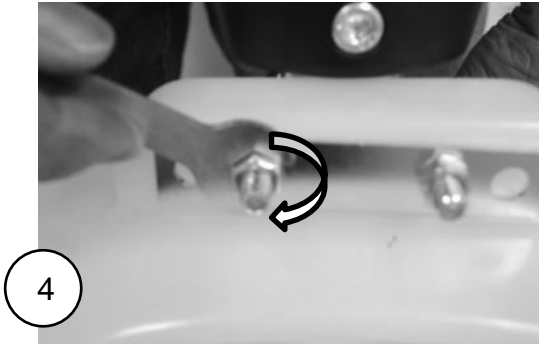
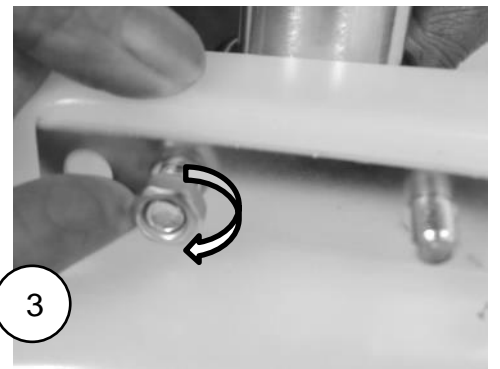
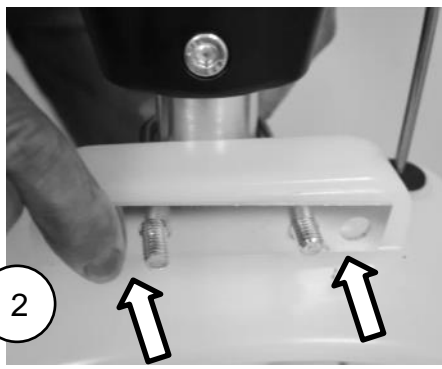
**WARNUNG – Bevor Komponenten angebracht oder entfernt werden, muss sichergestellt sein, dass die Maschine vom Stromnetz getrennt wurde.**



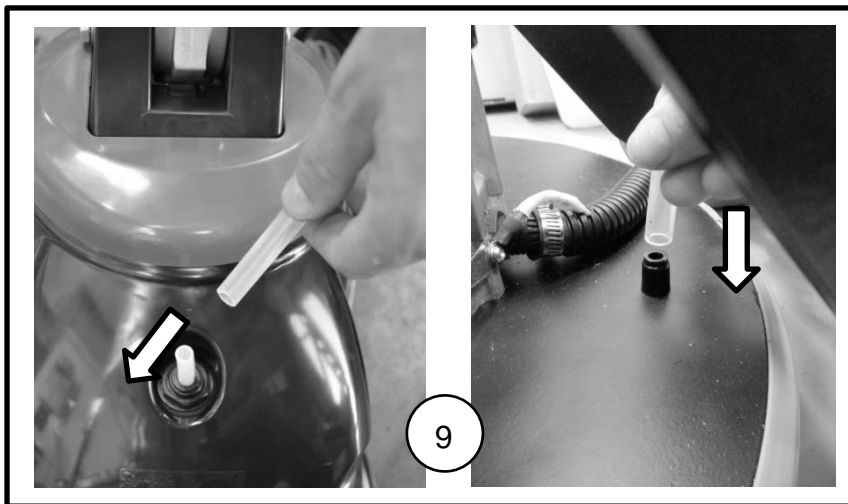
05-5000-0000



05-4435-0500



05-5000-0000



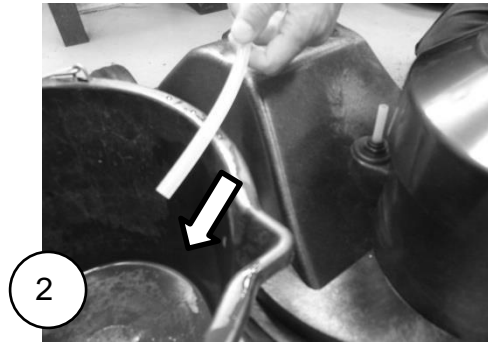
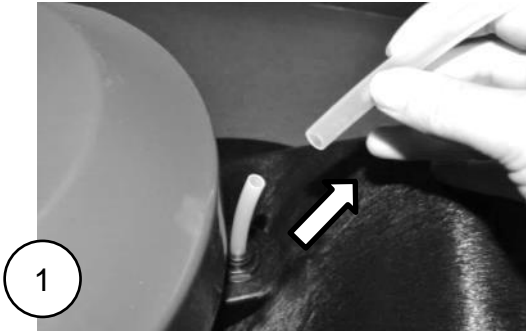
05-4435-0500



---

---

05-5000-0000



05-4435-0500

