

Spare Parts List

Model Ref.:- VTV

SERIES C (Serial Numbers 06806 Onwards)

Spare Parts List Issue 4 Dated 20-Dec-2016

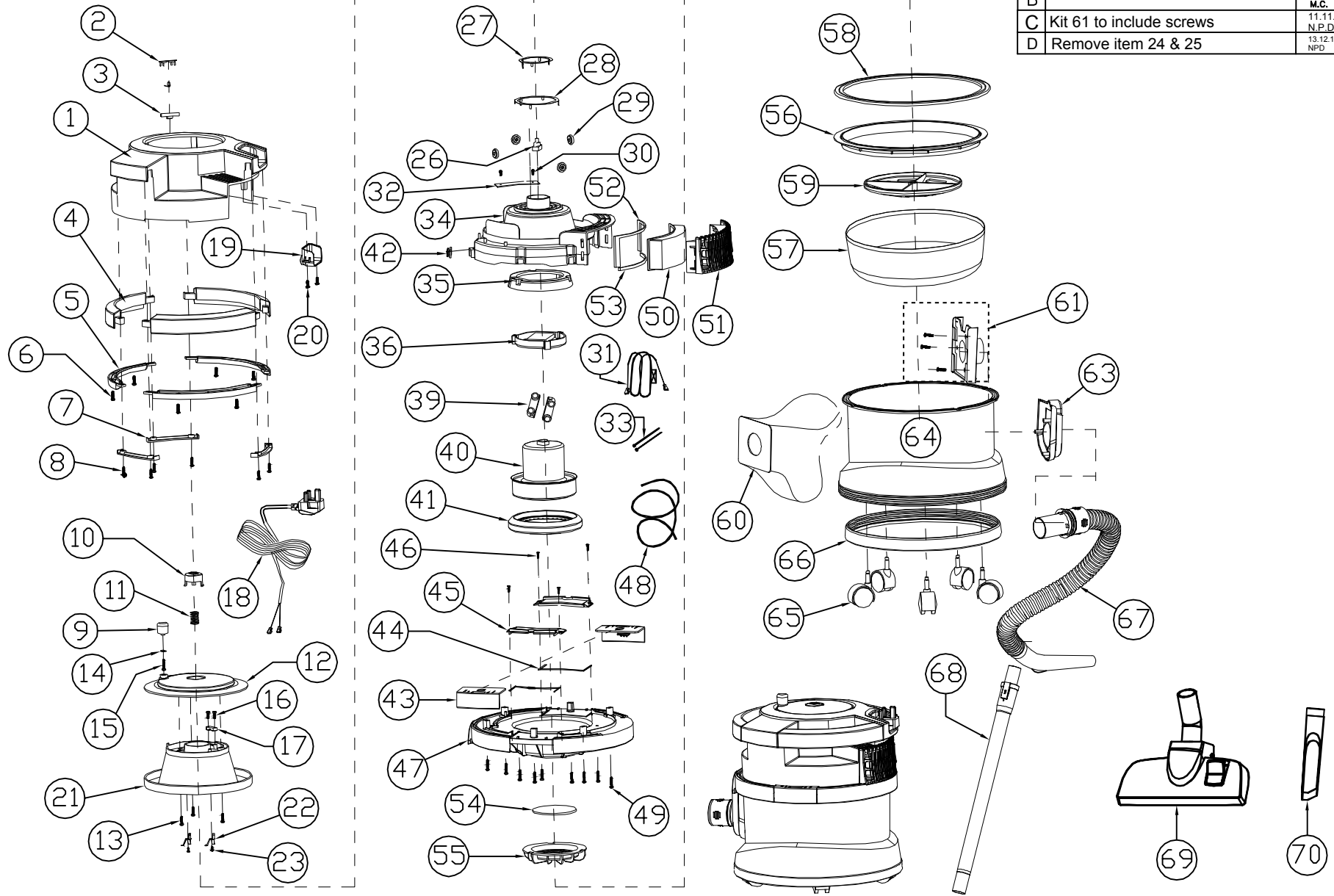
Ref. Drawing 09-1119-0000 Issue D Dated 13-Dec-2016

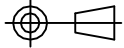
Drawing Ref.	Part Number	DESCRIPTION	Qty Per
1	96-0137-0000	Top Cover	1
2	96-0101-0000	Lamp Cover	1
3	96-0102-0000	Lamp Holder	1
4	96-0147-0000	Handle	3
5	96-0139-0000	Handle Cover	3
6		PBT 4*12 Self Tapping screw	6
7	96-0148-0000	Handle Plate	3
8		PBT 4*16 Self Tapping screw	6
9	96-0103-0000	Cord Rewinder Crank	1
10	96-0104-0000	Switch Button	1
11	96-0105-0000	Switch Button Spring	1
12	96-0146-0000	Upper Cord Rewinder	1
13		PBT 4*16 Self Tapping screw	3
14		Washer	1
15		PBT 4*16 Self Tapping screw	1
16		PBT 4*12 Self Tapping screw	2
17	96-0141-0000	Cord Plate	2
18	96-0107-0000	VTV Power Cord Assembly UK	1
18a	04-3954-0000	VTV Power Cord Assembly Euro	1
19	96-0108-0000	Cord Outlet	1
20		PBT 4*12 Self Tapping screw	2
21	96-0149-0000	Lower Cord Rewinder	1
22	96-0109-0000	Touching Plate	2
23		PWA 3*8 Self Tapping Screw	2
26	96-0111-0000	Switch	1
27	96-0112-0000	Inside Copper Loop	1
28	96-0113-0000	Outside Copper Loop	1
29	96-0114-0000	Idler Wheel (4 per in Kit)	1
30		PA 3*8 Self Tapping Screw	2
31	96-0115-0000	Inside Cord Assembly	1
32	96-0116-0000	PCB Assembly	1
33	96-0117-0000	Wiring Loom	2
34	96-0143-0000	Upper Motor Housing	1
35	96-0118-0000	Motor Damping Pad	1
36	96-0119-0000	Motor Holder	1
39	96-0122-0000	Motor Supporting Bead	1
40	96-0123-0000	Motor	1
41	96-0124-0000	Motor Sealing Ring	1
42	96-0125-0000	Lead Outlet Seal Ring	1
43	96-0126-0000	Dust Tank Link Buckle (2 per in kit)	1
44	96-0127-0000	Seal Ring (2 per in kit)	1
45	96-0128-0000	Cover Link Buckle (2 per in kit)	1

Drawing Ref.	Part Number	DESCRIPTION	Qty Per
46		KA 3*10 Self Tapping Screw	4
47	96-0144-0000	Lower Motor Housing	1
48	96-0129-0000	Seal Strip	1
49		PBT 4*20 Self Tapping Screw	9
50	20-0192-0000	Hepa Holder & 1xH13 filter and 5xVac inlet filter	1
51	96-0150-0000	Air Outlet Grid	1
52	96-0151-0000	Seal Ring Air Outlet 1	1
53	96-0152-0000	Seal Ring Air Outlet 2	1
54	20-0192-0000	1xH13 filter and 5xVac inlet filter	1
55	96-0133-0000	Filter Holder	1
56	20-0174-0000	Filter Bag and Frame	1
57			
58			
59			
60	20-0172-0000	Dust Bags (Packs of 10)	1
61	96-0134-0000	Bag Holder and suction port	1
		PBT 4*16 Self Tapping screw	3
63	96-0134-0000	Bag Holder and suction port	1
64	96-0153-0000	Dusk Tank	1
65	96-0135-0000	Universal Wheel (5 per in kit)	1
66	96-0154-0000	Bumper Strip	1
67	20-0168-0000	Hose Assembly	1
68	20-0169-0000	Telescopic Tube	1
69	RD270	Floor Brush	1
70	DS-076	Crevice Tool	1

Drawing/Part Number
09-1119-0000

Issue	Amendments	Sig./Date
A	NEW DRAWING	19.01.10 M.C.
B	MOTOR MUFFLERS REMOVED	06.12.10 M.C.
C	Kit 61 to include screws	11.11.13 N.P.D
D	Remove item 24 & 25	13.12.16 NPD



 3RD ANGLE PROJECTION DIMENSIONS IN MILLIMETRES DO NOT SCALE DRAWING © COPYRIGHT	Material -----	General Tolerance N/A	TRUVOX™ INTERNATIONAL LIMITED	
	Finish -----	Scale N.T.S.		
	Drawn M.D.C.	Checked M.D.C.	Date 13.12.16	Drawing/Part Number 09-1119-0000