

**Tacony CFC****Cimex X46 Parts List****Part Number: X46**

Series: A

Date: 01-Feb-22

Reference Drawing Number: 09-1151-0000

Reference Drawing Issue: C

Modified By: Jonathan Clarke

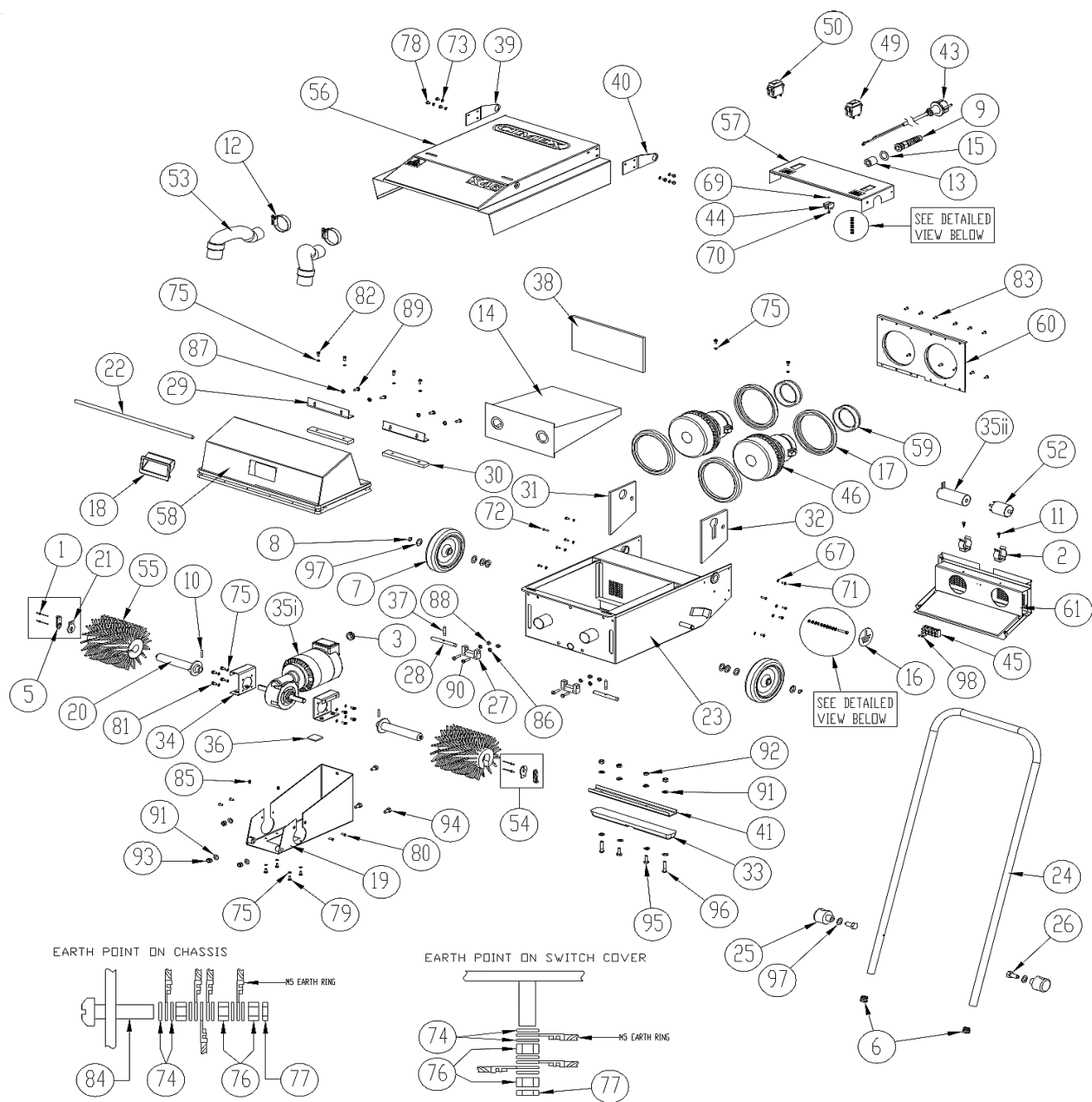
Service Parts List Issue: D

**ECN #**

Description of Change: BOM amendments

Ref. No.	Part No.	Part Description	Qty
1	02-4092-0000	Pop Rivet	4
2	02-4103-0000	Bracket For Capacitor	2
3	02-4129-0000	Grommet	1
4	02-4149-0000	Cable Tie White - Not Shown	10
5	02-4162-0000	Slide Latch Type 1500 Zinc	2
6	02-4163-0000	Insert	2
7	02-4164-0000	Wheel 12mm	2
8	02-4165-0000	External Circlip	2
9	02-4186-0000	Cable Gland	1
10	02-4287-0000	Roll Pin	2
11	02-4323-0000	Self Tapper	2
12	02-4369-0000	Jubilee Clip 2A Size 50mm (35mm - 50mm)	2
13	02-4371-0000	Ferrite Sleeve	1
14	02-4372-0000	Disposable Paper Bags (Pack of 10)	1
15	02-4550-0000	Nylon Washer	1
16	03-6185-0000	Earth Point Label	1
17	03-7065-0000	Mounting Ring Moulded	4
18	03-7200-0000	Cowl Handle	1
19	03-7231-0000	Brush Motor Chassis	1
20	03-7232-0000	Brush Spindle	2
21	03-7233-0000	Brush Retaining Plate	2
22	03-7235-0000	Brush Cowl Shaft Bright Zinc Plate	1
23	03-7236-0024	Chassis	1
24	03-7238-0000	Handle	1
25	03-7239-0000	Pivot Block	2
26	03-7240-0000	Handle Bolt	2
27	03-7241-0000	Bolt Block	2
28	03-7242-0000	Bolt Pin	2
29	03-7245-0000	Cowl Glide Bracket	2
30	03-7246-0000	Cowl Glide Bar	2
31	03-7256-0000	Insulation Gasket (Right)	1
32	03-7257-0000	Insulation Gasket (Left)	1
33	03-7258-0000	Rest Bar Rubber	1
34	03-7259-0000	Motor Mounting Bracket	2
35i	03-7260-0000	Motor 220/240 Volt 50/60 Hz	1
35ii		Capacitor 40uF (Pn: 04-3609-0000)	1
36	03-7267-0000	Motor Support Pad	1
37	03-7642-0000	Bolt Handle	2
38	03-7644-0000	Vacuum Motor Filter	1
39	03-7645-0000-R	Lid Hinge (Right)	1
40	03-7645-0000-L	Lid Hinge (Left)	1
41	03-7649-0024	Rest Bar	1
42	04-0221-0000	Cable Tie Black - *Not Shown*	2

43	04-3055-0053	Power Cord UK Plug (UK version only)	1
	04-3055-0153	Power Cord EURO Plug (EURO Version only)	1
44	04-3146-0412	12 Way Terminal Block With Wide Protector	2 of 12
45	04-3146-0412	12 Way Terminal Block With Wide Protector	5 of 12
46	04-3567-0000	Motor For Vac 240V	2
47	04-3576-0000	(Blue) Blade Terminal *Not Shown*	4
48	04-3602-0000	Ring Terminal *Not Shown*	1
49	04-3605-0000	Vacuum Switch 8Amp	1
50	04-3607-0000	Brush Switch 2.5Amp	1
51	04-3859-0000	Wiring Kit (Complete Loom) *Not Shown*	1
52	04-3869-0000	EMC Filter	1
53	33626	Hose 1 1/2 ID With Cuff	2
63	04-3611-0000	Terminal Crimp - Blue (Bi)	2
<b>SUB-ASSEMBLIES</b>			
54	05-3913-0000	X46 Brush Retaining Clip	2
55	05-4096-0000	Brush Spirol 0.6 Nylon (L/R Set)	1
	05-4097-0000	Brush Spirol 0.6 Tynex (L/R Set)	1
56	05-4590-0000	Vacuum Cover With Seal And Decals	1
57	05-4591-0000	Switch Cover Assembly With Decals	1
58	05-4592-0000	Brush Cowl Assembly	1
59	05-4593-0000	Motor Gasket (Top) With Sealing Ring	2
60	05-4594-0000	Baffle Plate With Foam Gaskets	1
61	05-4595-0000	Rear Panel With Gasket	1
62	33625	Main Chassis Assembly	1
<b>FASTENERS</b>			
67	00-0400-0503	M4 Flat Washer Ss	8
69	00-0300-0511	M3 Spring Washer	1
70	00-0300-0721	M3 Nyloc Nut	1
71	00-0410-0011	M4 X 10 Posi Pan Head Screw	8
72	00-0416-0051	M4 X 16 Csk Pozi Screw	2
73	00-0500-0501	M5 Plain Washer Form A	6
74	00-0500-0507	M5 Brass Flat Washer	10
75	00-0500-0521	M5 Internal Shakeproof Washer	18
76	00-0500-0701	M5 Full Nut	5
77	00-0500-0723	M5 Nylock Nut	2
78	00-0506-0011	M5 X 6 Hex Head Bolt	6
79	00-0510-0011	M5 X 10 Pozi Pan Head Screw	4
80	00-0510-0031	Countersunk Pozi Screw	4
81	00-0510-0091	M5 X 10 Socket Cap Head Screw	8
82	00-0510-0111	M5 X 10 Hex Head Bolt	4
83	00-0512-0031	M5 X 12 C'snk Screw	12
84	00-0530-0011	M5 X30 Pozi Pan Head Screw	1
85	00-0600-0171	M6 X 8 Socket Grub Screw	2
86	00-0600-0502	M6 Washer	4
87	00-0600-0502	M6 Washer	4
88	00-0600-0721	M6 Nyloc Nut	4
89	00-0616-0111	M6 X 16 Hex Head Bolt	4
90	00-0625-0111	M6 X 25 Hex Head Bolt	4
91	00-0800-0501	M8 Plain Washer	11
92	00-0800-0701	M8 Full Nut	2
93	00-0800-0721	M8 Nyloc Nut	5
94	00-0816-0111	M8 X 16 Hex Head Bolt	3
95	00-0820-0111	M8 X 20 Hex Head Bolt	2
96	00-0835-0181	M8 X 35 Skt Button Screw	2
97	00-1200-0503	M12 Washer	10
98	X9531	#4 X 3/4 Screw Self Tapper	2



# Tacony CFC

# Cimex X46 Parts List

Part Number:

**X46**

Date: 01-Feb-22

Sheet no.

Drawing Number: 09-1151-0000

1 / 1

Drawing Issue: D

DESCRIPTION OF CHANGE

ECN #

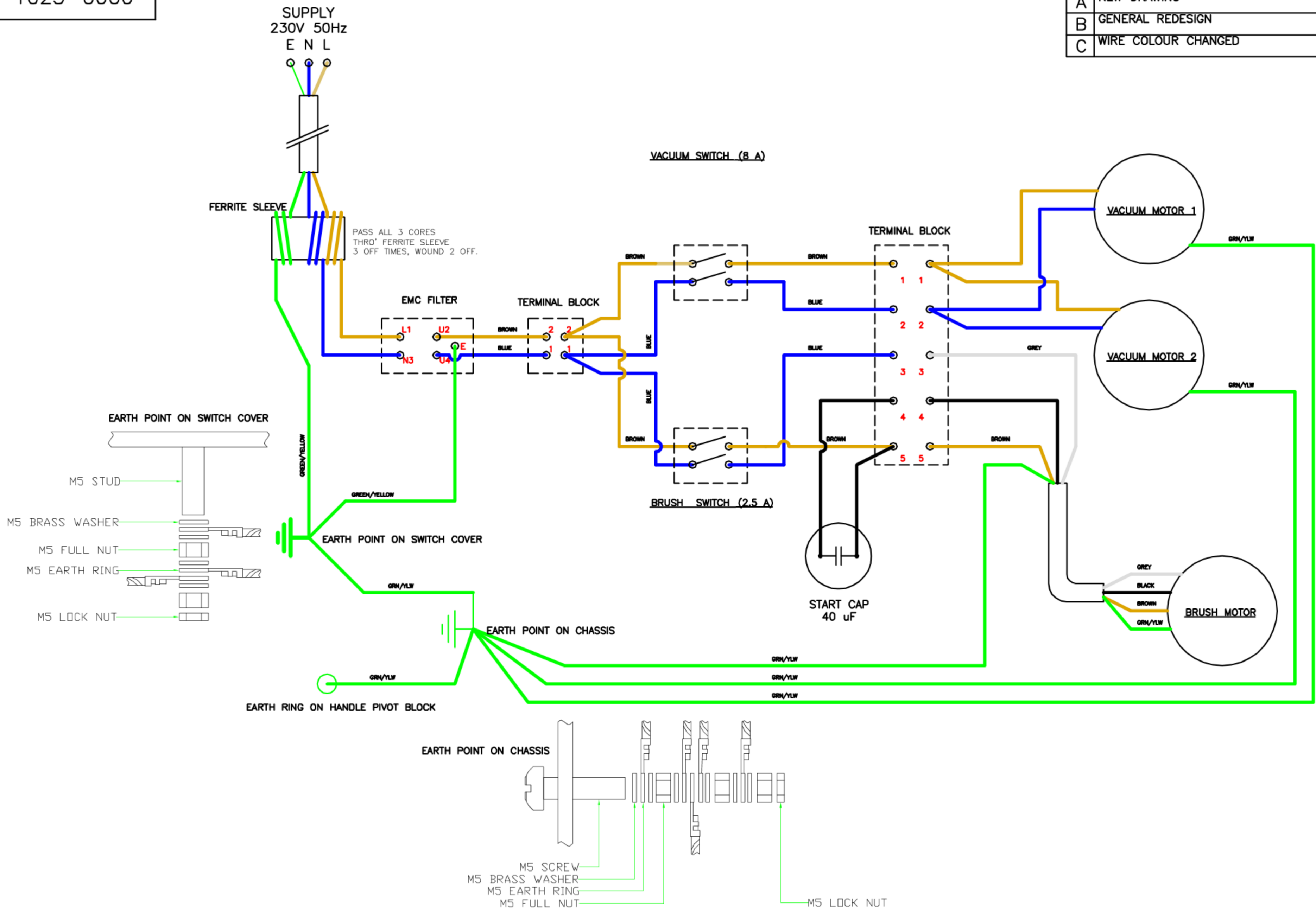
Modified By: Jonathan Clarke

-

-

Drawing/Part Number  
09-1025-0000

Issue	Amendments	Sig./Date
A	NEW DRAWING	25.02.04 S.J
B	GENERAL REDESIGN	29.05.07 S.J
C	WIRE COLOUR CHANGED	04.07.07 M.D.C.



3RD ANGLE PROJECTION  
DIMENSIONS IN MILLIMETRES  
DO NOT SCALE DRAWING  
© COPYRIGHT

Material	-----
Finish	-----
Drawn	S JONES
Checked	S JONES

General Tolerance	±0.25
Scale	N.T.S.
Date	25.02.04

<b>TRUVOX<sup>TM</sup> INTERNATIONAL LIMITED</b>	
Title	(CIMEX) X-46 230 50HZ WIRING DIAGRAM
Drawing/Part Number	09-1025-0000

RED  
ON  
MASTER