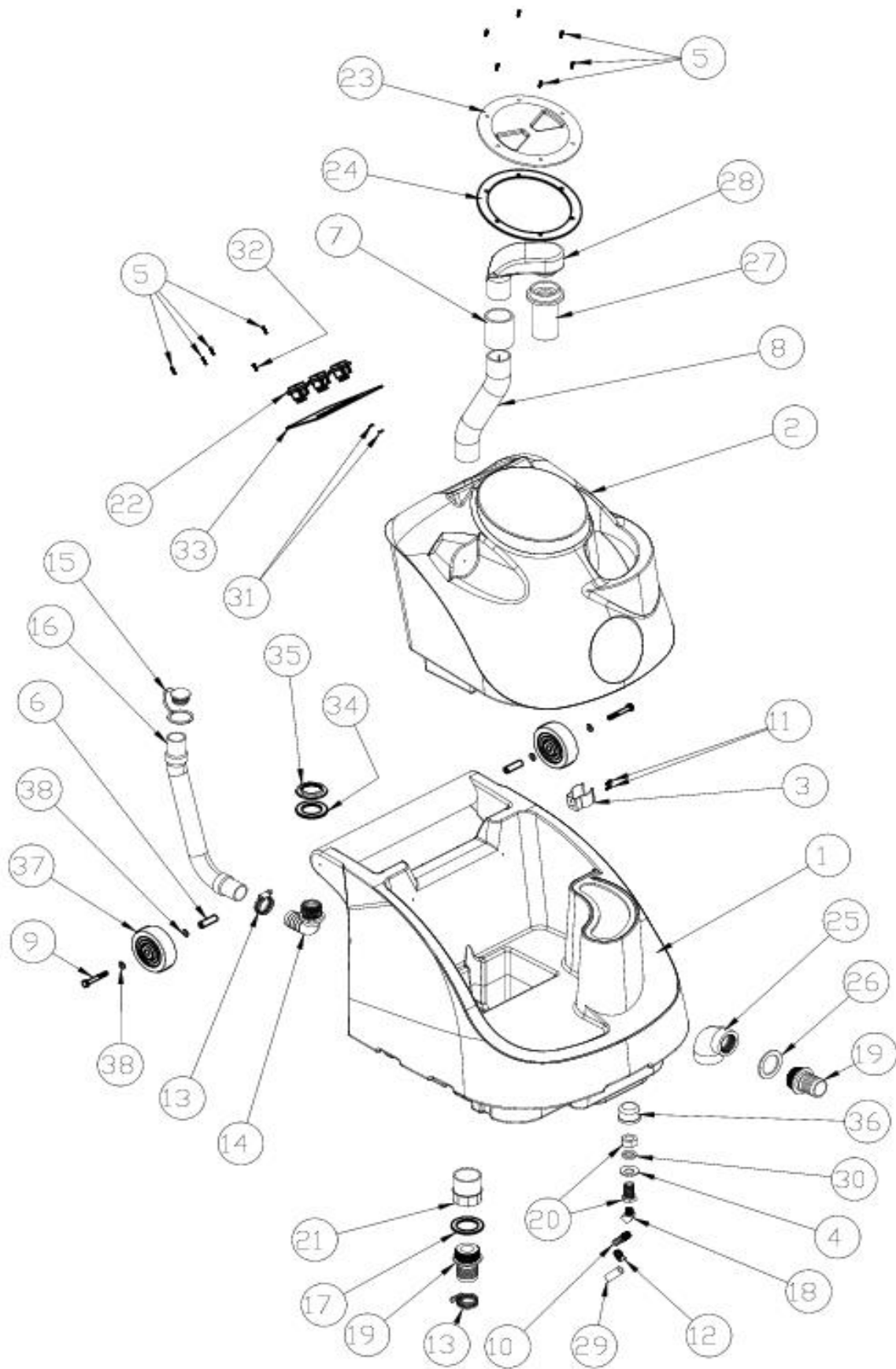


Tacony CFC

Hydromist 55/100 Parts List

Machine Number:	HM55/100	
Series:	A	
Date:	22-APR-2022	
Reference Drawing:	09-1103-0000	
Reference Drawing Issue:	A	
Modified By:	J Clarke	
Service Parts List Issue:	8	ECN #
Description of Change:	change to wheel part numbers from PX160B+ to X9066 and motor description	1290

Ref. No.	Part No.	Part Description	Qty
DRAWING REF: 09-1103-0000 PAGE 1			
1	33071-TEAL	Solution Tank	1
2	33072	Recovery Tank	1
3	72173A	Black Vinyl Spring Clip	1
4	72274A	Washer 3/4" Neoprene Bond	1
5	72387A	Screw #8 x 5/8"	10
6	72486A	Spacer,1.625 Long.50 OD .313 ID	2
7	72615A	PVC Coupling 1-1/2"	1
8	72628C	Pipe PVC Schedule 40 1-1/2	1
9	72645A	Bolt 5/16 -18 x 2- 1/4 Hex	2
10	7AT004	Barb, 1/4M x 1/2H	1
11	7BH004	Screw 10-32x3/8 SS	1
12	7DL003	1/4" Worm Gear Clamp SS	1
13	7DL005	1-1/2" Worm Gear Clamp SS	1
14	7GR016	Elbow, 1-1/4M x 1-1/4H Nylon	1
15	PAS36	Drain Hose Plug	1
16	PAS37	Drain Hose	1
17	PX14	Dump Valve Gasket 1-1/2	1
18	PX17	Street Elbow 45 Degree Brass	1
19	PX25	Plastic Fitting 1-1/2" NPTx1-1/2" Hose Barb	1
20	PX48	Fitting Brass Bulkhead 3/4"	1
21	PX63	Plastic Coupler 1-1/2" Slip x 1-1/2" FPT	1
22	32966	Rocker Switch w/ Cover DPST 20A	4
23	PX103	Lid screw -in 6" clear w/ Black Ring	1
24	PX103G	Lid Gasket	1
25	PX11A	Elbow 1-1/2" Plastic	1
26	PX14A	Valve Gasket .125" Thick	1
27	PX31L	Float Cage w/ Light Ball	1
28	PX33	Vacuum Tube	1
29	PX3H	Solution Hose 3/8" I.D X 30" Length	1
30	PX48G	Gasket Fiber 1.125 OD X .75	1
31	X8256	Nut	1
32	X8278	Screw8-32 X 1/2	1
33	X9152	Switch Panel w/o Heater	1
34	X9164	Gasket 1-1/4	1
35	X9165	Lock Nut 1-1/4"	1
36	X9294	Pump Protection Filter	1
37	X8025	Wheel Black, 4" x 1-1/4"	2
38	X8235	Washer 1/4" Flat Zinc	4
Not Shown	X9149	Gasket Between Tanks 1 x 14.25	1



Tacony CFC

Hydromist 55/100

Part Number:

HM55/100

Date: 05-Sept-18

Sheet no.

Drawing Number: 09-1103-0000

1 / 3

Drawing Issue: A

Modified By: J WYLES

DESCRIPTION OF CHANGE

ECN #

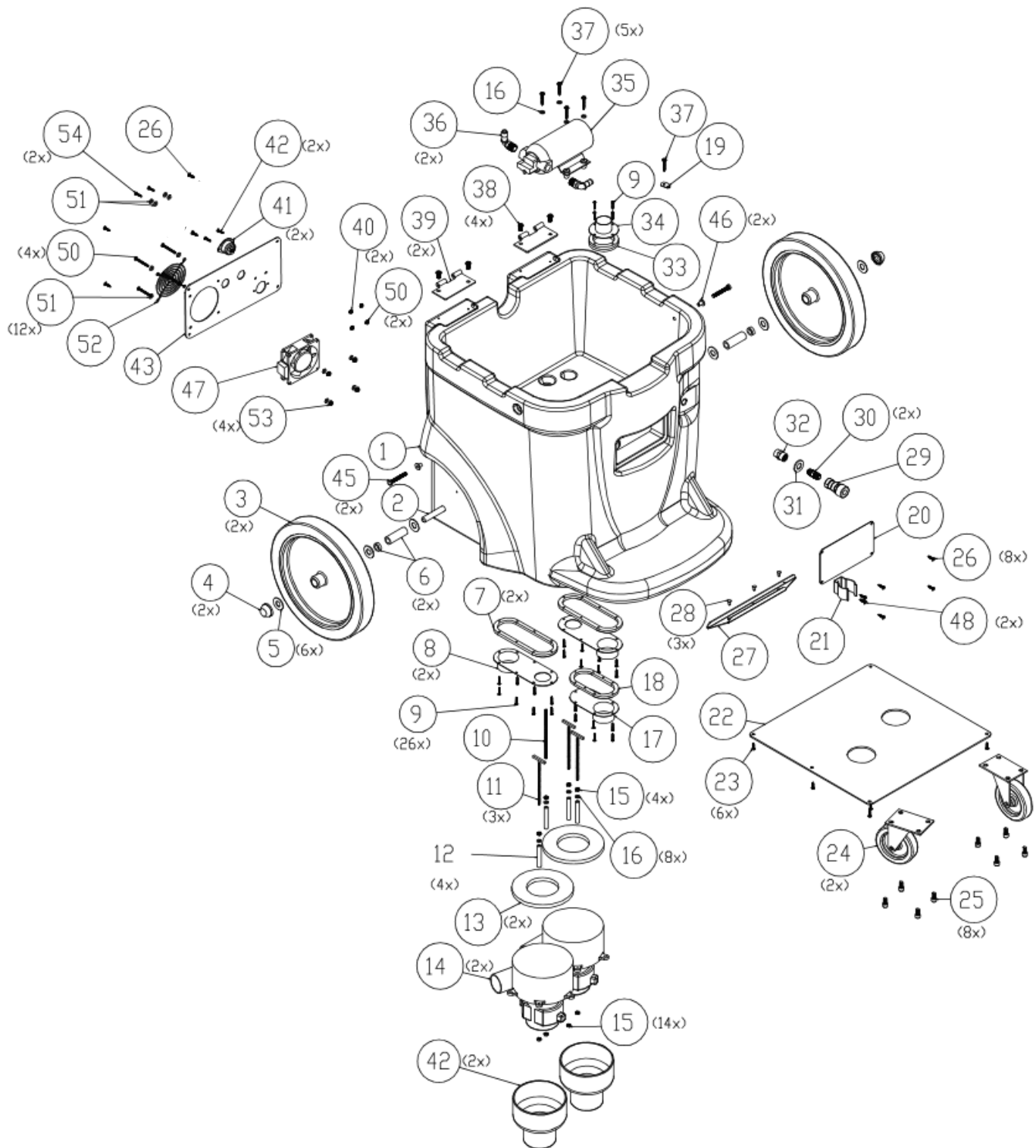
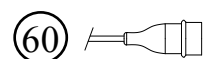
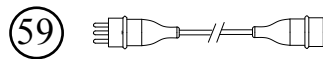
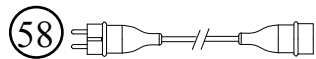
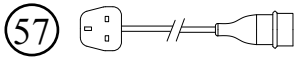
Reference Parts List Issue: 7

Part number change for Hose...

1179

Ref. No.	Part No.	Part Description	Qty
		DRAWING REF: 09-1103-0000 PAGE 2 & 3	
1	72620ABREPRO+	Base, PFX1350, Black	1
2	72633A	Axle, 23.375" long	1
3	X9066	Wheel, 12" w/ 1.75" Non-Marking, Gray Tire on Black	2
4	7GL002	Push Nut, 1/2"	2
5	7CM007	Washer, 1/2 USS Flat, 18-8 SS	4
6	72634A	Bushing, 1/2" ID X 3/4" OD X 2-1/4" long	2
	72635A	Spacer, 1/2" ID X 3/4" OD X 1/4" long - Supplied With 72634A	2
7	72640A	Gasket, Vac Manifold, long	2
8	72623A	Cover, Vacuum Manifold, long	2
9	7CW002	Screw, #6 X 3/4 Phil Pan TS, Type A 18-8 SS	26
10	72000A	Rod, 3/16 X 5-1/2, All Thread Stud, 18-8 SS	1
11	X9204	Rod, 10-24, "T" Bolt Zinc Plated	3
12	72651A	Spacer, VAC Motor, 2.375" Long	4
13	70020B	Gasket, Vacuum Motor Seal	2
14	1989-B-kit	Vacuum Motor, 2-Stage, 230VAC, includes gasket, spacers, bracket, screws, nuts	2
15	7BF003	Nut, Kep, #10-24 Zinc	4
16	7CM003	Washer, #10 USS Flat, 18-8 SS	8
17	72624A	Cover, Vacuum Manifold, Short	1
18	72641A	Gasket, Vacuum Manifold, Short	1
19	X9069+	End Loop, SS, w/ 2 holes, 16G	1
20	X9157+	Cover, Pressure Regulator Plate	1
21	72173A	Spring Clip, Black Vinyl Coated	1
22	72636A	Cover Plate, Bottom	1
23	72388A	Screw, #10 X 5/8, Tap Phil, SS Pan Head	6
24	PX65	Caster, 4" Black	2
25	7DT001	Bolt, 5/16-18 X 5/8, Hex Tap Zinc	8
26	72387A	Screw, #8 X 5/8, Black, Tap Phil, Pan Head	8
27	72661A	Wand Holder	1
28	72662A	Screw, #10 X 1/2, Phil Flat SM, Black, Undercut Head	3
29	PX6	1/4" X 1/4" Female Quick Disconnect Coupler Valved, Brass	1
30	7CX002	Nipple, Hex 1/4 MPT	1
31	X8239+	Washer, 1/2" USS Flat Zinc	1
32	PC38+	Connector, Double Thread, Female, 1/4" to 1/4" Coupling	1
33	72642A	Gasket, Vac Manifold, Circle	1
34	72625A	Cover, VAC Manifold, Circle	1
35	SF814-2	Pump, 100 PSI w/ By-Pass, EPDM Valves	1
36	PX15+	Fitting, 90° Nylon Elbow, 3/8" NPT X 3/8" Hose Barb	2
37	71644A	Screw, #10 X 1", Phil Pan, TS, Type A 18-8 SS	5
38	7BS003	Screw, 1/4-20 X 1/2, Phil Pan, MS 18-8 SS	4
39	X9014+	Hinge	2
40	7BF008	Nut, KEP, 10-32 Zinc	2
41	X9818	Receptacle 230V 3pin Male	1
42	X8243+	Screw, 6-32 x 3/4" Phil Pan	2
43	X9131-T6	Cord Panel	1
-	-	-	1
		-	1
45	X9177+	Screw, 1/4-20 X 1-3/4 PH Ext Tooth Washer Full Thread	2
46	72665A	Insert, Tee Nut, 1/4-20 Thread, 1/2 High, .305 Barrel Dia.	2
47	72701A	Fan Cooling 230V	1
48	X9098+	Screw, #10 X 1", A point, Phillips Pan Head	2
50	X8274+	Screw, 8-32 x 2-1/2" Phil Pan	2
51	X8225+	Washer #10 Small SAE Flat	12

52	72702A	Cover Fan	1
53	X8260	Nut 8-32 Lock w/ nylon insert	4
54	X8851+	Screw, 10-32 X Phil Pan	2
55	X8257+	Nut, 6-32 Lock w/ nylon Insert	2
56	70522A	Coupling Cooling Air Inlet	2
57	04-3999-0053	Power Cord 15m UK Orange 230V female connector 3pin	1
58	04-3999-0153	Power Cord 15m EURO Orange 230V female connector 3pin	1
59	04-3999-0353	Power Cord 15m AUS Orange 230V female connector 3pin	1
60	X9817	Power Connector 230V female 3Pin	1
Not Shown	72656A	HOSE 1-1/2" ID X 25" Length Wire Reinforced Black	1
Not Shown	72668A	Shim, Spring Clip	1
Not Shown	72669A	Pad, Spring Clip	1
Not Shown	7CZ001	Vacuum Hose 2" X 23" Length	Cut Length
Not Shown	PX215+	Clamp, 2-1/2" Worm Gear Stainless hex Slot	4
Not Shown	7BF030	Nut 10-24 Lock w/ nylon insert	4
Not Shown	K1112+	Cuff Assmbly 1-1/2" Grey	2
Not Shown	X8284+	Screw, 8-32 x 3/8" " Phil Pan	2
Not Shown	X8283+	Washer 9-32"ID x 1"OD x 0.50THK ST/ST	1



Tacony CFC

Hydromist 55/100

Part Number:

HM55/100

Date: 05-Sept-18

Sheet no.

Drawing Number: 09-1103-0000

2 / 3

Drawing Issue: A

Modified By: J WYLES

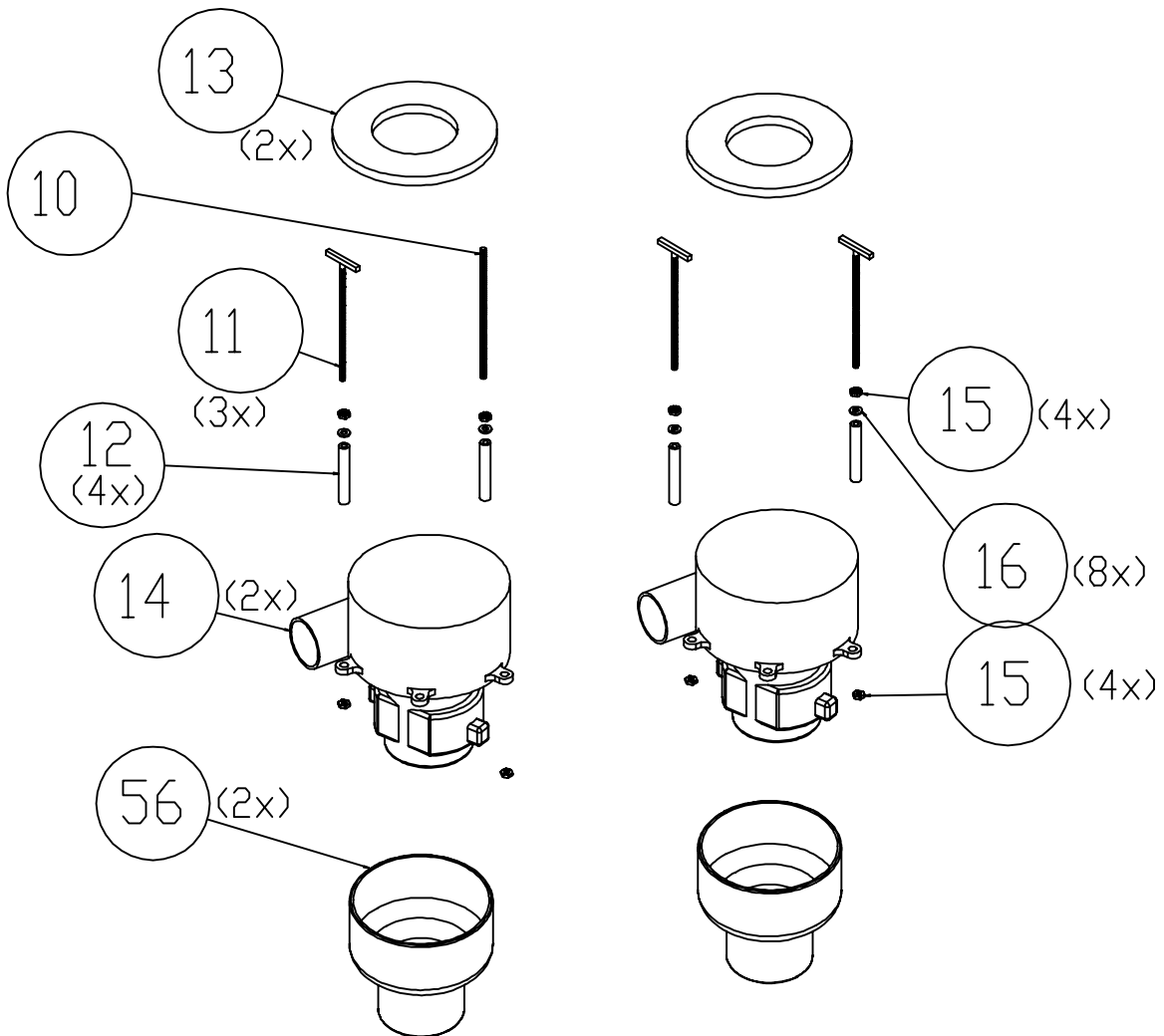
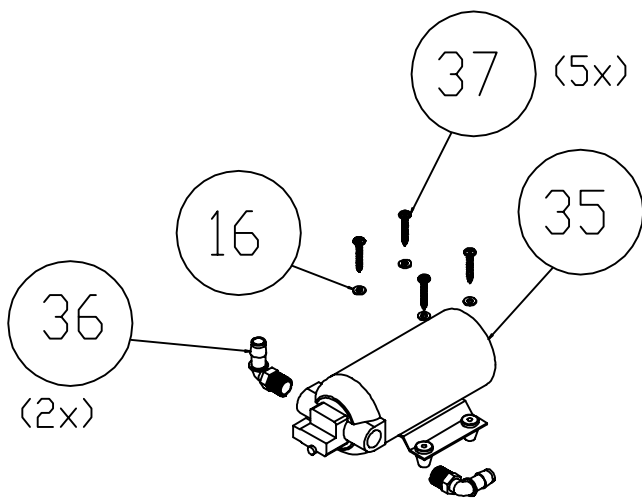
DESCRIPTION OF CHANGE

ECN #

Reference Parts List Issue: 7

Part number change for Hose...

1179



Tacony CFC

Hydromist 55/100

Part Number:

HM55/100

Date: 05-Sept-18

Sheet no.

Drawing Number: 09-1103-0000

3 / 3

Drawing Issue: A

Modified By: J WYLES

DESCRIPTION OF CHANGE

ECN #

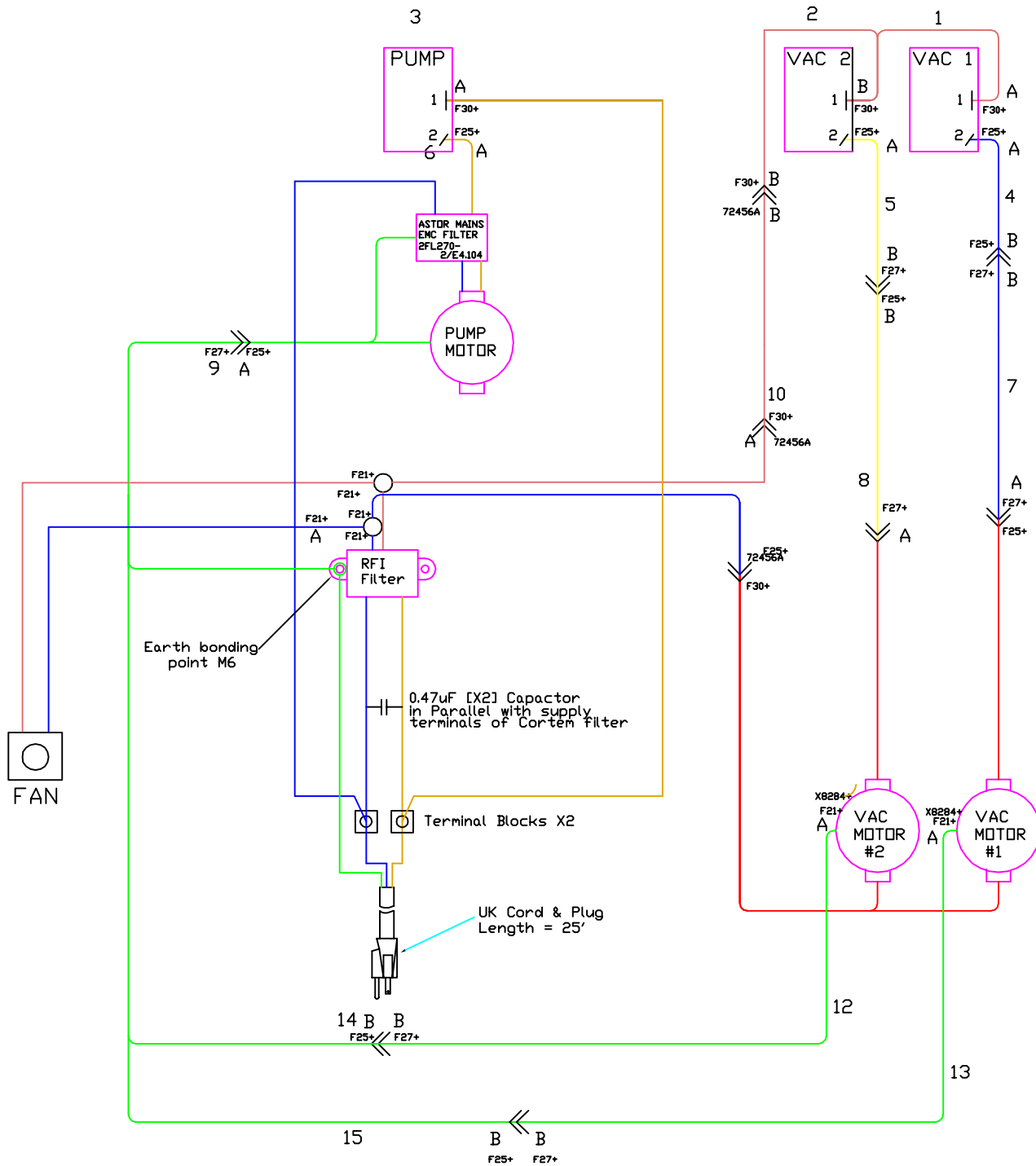
Reference Parts List Issue: 7

Part number change for Hose...

1179

SCHEMATIC USED FOR THE FOLLOWING MACHINES:

HM55/100	-	-	-
-	-	-	-
-	-	-	-
-	-	-	-



REV	DATE	ECN	DESCRIPTION	BY	Powr-Flite COMMERCIAL FLOOR CARE EQUIPMENT		
-	-	-	-	-	3101 Wichita Court Fort Worth, TX 76140-1755		
-	-	-	-	-	MATERIAL	FINISH	SCALE
-	-	-	-	-	DWN CSD	DATE 6/12/08	SHT
XX ±0.02 IN. RADII XX ±0.02 XXX ±0.01 IN. XXX ±0.01 XXXX ±0.005 IN. COMMON CONCENTRIC TO 0.002" XXXXX ±0.0005 IN. TO 0.002" ± 0°30' BREAK SHARP EDGES TO .010 MAX.					DESCRIPTION WIRING DIAGRAM - 230V WPF039		
A PART NUMBER					REV		-