

Tacony CFC

CR48/110/60 Handle Assembly

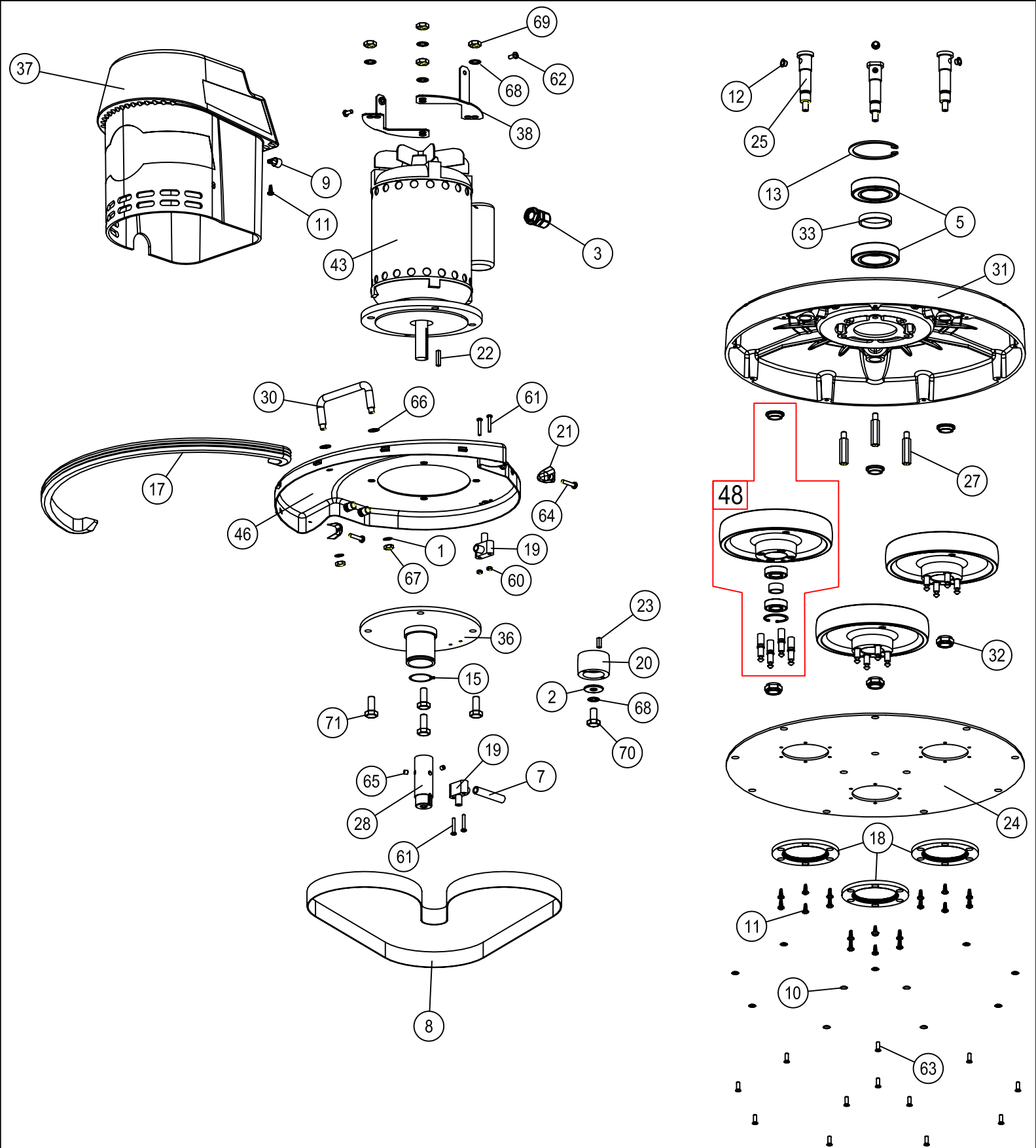
Drawing Number: 09-1046-0000

Date:	5/14/2009		
Machine:	CR48/110/60		
Reference Parts List:	05-4365-0000		
Modified By:	G SECHERE	DESCRIPTION OF CHANGE	ECN #
Revision:	A	COMPONENTS CHANGE	N/A

Tacony CFC
CR48/110/60 Handle Assembly
Part Reference: 05-4365-0000

Date:	5/14/2009		
Machine:	CR48/110/60		
Reference Drawing Number:	09-1046-0000		
Modified By:	G SECHERE	COMPONENTS CHANGE	ECN #
Revision:	A	COMPONENTS CHANGE	N/A

Ref. No.	Part No.	Part Description	Qty
CORE COMPONENTS			
2	02-3950-0000	3/4 in EXTERNAL CIRCLIP	1
3	02-4219-0000	NX5 P CLIP (MAINS CABLE)	1
7	02-4548-0000	RECTANGULAR PLUG	1
9	02-4149-0000	TYRAP - SMALL (BI)	4
11	02-4175-0000	HANDLE GRIP - BLACK MOSS REF 10156	2
12	02-4176-0000	GROMMET	1
15	02-4186-0000	CABLE GLAND w/ BACKNUT	1
18	02-4026-0000	P-CLIP (DROP LEAD)	1
26	03-6185-0000	EARTH POINT LABEL	1
27	03-6953-0000	LOCKING HANDLE	1
28	03-6957-0000	PIVOT	1
30	03-7300-0000	HANDLE BOX (FRONT & REAR SET)	1
31	03-7301-0000	WATER VALVE LEVER	1
33	03-7660-0000	CABLE HOOK	1
34	03-8005-0000	CR48 COMMON HANDLE FRAME	1
40	04-0221-0000	CABLE TIE BLACK *NOT SHOWN*	1
42	04-3246-0000	MAINS CABLE 14 AWG (CORDSET WITH PLUG) *NOT SHOWN*	1
48	04-3481-0000	SPRING SPADE TERMINAL, BLUE *NOT SHOWN*	6
49	04-3602-0000	RING TERMINAL #10 *NOT SHOWN*	2
51	04-3626-0000	SWITCH (ROTARY)	1
59	04-3548-0000	CABLE 2.5MM 14AWG (DROP LEAD) *NOT SHOWN*	87"
FASTENERS			
78	00-0420-0033	M4 X 20 PHIL FLAT MACHINE SCRW	4
79	00-0400-0723	M4 HEX NYLOC NUT	4
82	00-0500-0503	M5 WASHER ST/ST	2
83	00-0500-0723	M5 NYLOC NUT ST/ST	1
85	00-0510-0171	M5 x 10 SOCKET SET SCREW ST/ST	1
87	00-0512-0013	M5 X 12 POZI PAN HEAD SCREW ST/ST	6
88	00-0540-0013	SCREW,M5 X 40 PAN HEAD S/S	1
89	00-1000-0703	M10 FULL NUT	1
90	00 0400-0523	M4 SHAKEPROOF WASHER	2
91	00-0410-0023	M4x10 POZI PAN HEAD ST/ST	2
92	00-0400-0703	M4 FULL NUT ST/ST	2
93	00-0500-0507	M5 FLAT WASHER BRASS	3
94	00-0500-0703	M5 HEX NUT S/S	2
95	00-0500-0713	M5 LOCK NUT	1
96	00-0500-0523	M5 SHAKEPROOF WASHER SS	1
97	00-1000-0523	M10 INT TOOTH LOCK WASH S/S	1
98	00-0520-0013	M5 X 20 PAN POZI M/C SCREW A2	1



Tacony CFC

CR48/110/60 Head Assembly

DRAWING NO.: 09-1062-0000

MACHINE: CR48/110/60

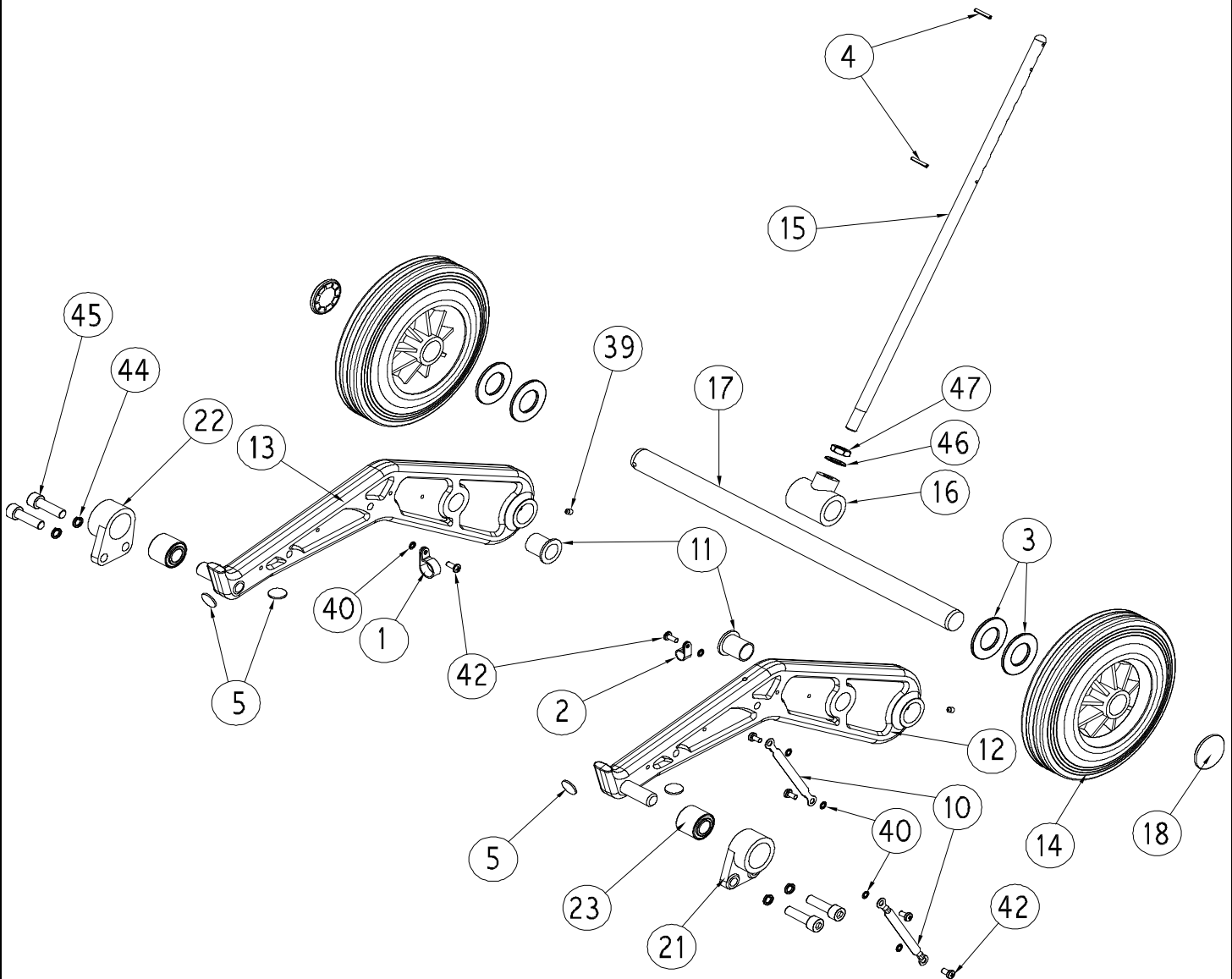
REF. PARTS LIST: 05-3940-0000

SERIES: B

REVISION	ECN #	DESCRIPTION OF CHANGE	MOD. BY	DATE
A	0279	CHANGED MOTOR TO LEMAC; MOTOR COVER TO 03-8230-0000	G.S.	2/15/2010

Tacony CFC		CR48/110/60 Head Assembly	
Part Reference: 05-3940-0000			
Date:	07-Nov-16		
Machine:	CR48/110/60		
Reference Drawing Number:	09-1062-0000		
Modified By:	N DOWSE	DESCRIPTION OF CHANGE	ECN #
Revision:	B	ADDITION OF COMPONENTS	961

Ref. No.	Part No.	Part Description	Qty
CORE COMPONENTS			
2	02-4335-0000	M10x30 WASHER	1
3	02-4385-0000	CABLE GLAND	1
5	02-4020-0000	BEARING 6009-2RS	2
7	02-4179-0000	WATER FEED TUBE	1.75"
8	02-4574-0000	BELT - NITTA 1465x25 (BLUE POLY)	1
9	02-4279-0000	P CLIP(HEYCO 350-3364)	1
10	02-4320-0000	BRASS CUP WASHER No8	12
11	02-4323-0000	SELF TAP No10x12 POZI PAN HD ST/ST	19
12	02-4381-0000	PLASTIC INSERT (REF 12157)	3
13	02-4380-0000	CIRCLIP INTERNAL 1300 - 75mm	1
15	02-4024-0000	CIRCLIP EXTERNAL	1
17	03-6898-1000	BUMPER STRIP	28.5"
18	03-6910-0000	DUST SEAL	3
19	03-8284-0000	WATER FEED ELBOW	2
20	03-7665-0000	MOTOR PULLEY NOM DIA 50mm	1
21	03-6928-0000	BUMPER RUBBER CLIP	2
22	03-6930-0000	KEY 3/16 x 3/16 x 25mm	1
23	03-6931-0000	KEY 3/16 x 3116 x 5/8	1
24	03-6940-0000	BOTTOM COVER PLATE	1
25	03-6944-0000	BRUSH SPINDLE (BRASS - WATER FEED)	3
27	03-6946-0000	BOTTOM COVER SPACER	3
28	03-6947-0000	MOTOR SHAFT EXTENSION	1
30	03-6951-0000	LIFTING HANDLE	1
31	03-6962-0000	EDU BOWL (BLUE) CR48	1
32	03-7220-0000	MI6 NYLOC NUT (M'C'D)	3
33	03-7284-0000	CENTRE BEARING SPACER	1
36	03-7324-0000	SPIGOT PLATE	1
37	03-8230-0000	CR 48/61 MOTOR COVER	1
38	03-7833-0000	MOTOR COVER BRACKET	2
39	03-7654-0000	DECAL - FRONT BARS *NOT SHOWN*	1
40	03-7655-0000	DECAL - FRONT BADGE *NOT SHOWN*	1
41	03-7685-0000	DECAL - SIDE R48 (LEFT & RIGHT HAND PAIR) *NOT SHOWN*	1
42	03-7944-0000	DECAL - CIMEX FROM TRUVOX *NOT SHOWN*	1
43	04-3914-0000	MOTOR 100-110V 50/60Hz 1.5HP	1
44	04-3602-0000	#10 16-14 INSULATED RING TERMINAL *NOT SHOWN*	5
46	03-7325-0000	BUMPER SHIELD ASSEMBLY CR48	1
48	05-4545-0000	CR48 BRUSH PULLEY ASSEMBLY	3
FASTENERS			
60	00-0400-0707	M4 BRASS NUT	2
61	00-0425-0023	M425 POZI PAN HD SCREW ST/ST	4
62	00-0512-0013	M5x12 POZI PAN HD SCREW ST/ST	2
63	00-0512-0033	M5x12 COUNTERSUNK SCREW ST/ST	12
64	00-0525-0013	M5x25 POZI PAN HD SCREW ST/ST	2
65	00-0606-0171	M6x6 GRUB SCREW SOCKET HD	2
66	X8218+	WASHER SAE 5/16 SAE FLAT ZINC	2
67	00-0800-0713	M8 1/2 NUT S/S	2
68	00-1000-0523	MI 0 INTERNAL SHAKEPROOF WASHER	5
69	00-1000-0703	MI 0 LOCK NUT S/S	4
70	00-1020-0123	MI 0x20 BOLT S/S	1
71	00-1035-0111	M10x35 BOLT Z/P	4



Tacony CFC

CR48/110/60 Chassis Assembly

Drawing Number: 09-1064-0000

Date:	12/29/2009		
Machine:	CR48/110/60		
Reference Parts List:	05-4479-0000		
Modified By:	G SECHERE	DESCRIPTION OF CHANGE	
Revision:	B		
	ADDED SET SCREWS (#39)	ECN #	
		0134	

Tacony CFC
CR48/110/60 Chassis Assembly
Part Reference: 05-4479-0000

Date:	12/29/2009		
Machine:	CR48/110/60		
Reference Drawing Number:	09-1064-0000		
Modified By:	G SECHERE	DESCRIPTION OF CHANGE	ECN #
Revision:	B	ADDED SET SCREWS (#39)	0134

Ref. No.	Part No.	Part Description	Qty
CORE COMPONENTS			
1	02-4448-0000	P CLIP (CONDUIT)	1
2	02-4279-0000	P CLIP (WATER HOSE)	1
3	02-4363-0000	WASHER (USED AS WHEEL SPACER SUBJECT TO QTY CHANGE)	4
4	02-4208-0000	SELLOCK PIN 1/8x7/8	2
5	02-4187-0000	BUFFER RUBBER 19mm x 1.5mm	4
10	03-6899-0000	EARTH LEAD (WITH INTEGRAL TERMS)	2
11	03-6919-0000	FORK HANDLE BUSH (BLACK)	2
12	03-8175-0000	LIFTING FORK (L/H)	1
13	03-8176-0000	LIFTING FORK (R/H)	1
14	03-7277-0000	WHEEL 200mm DIA	2
15	03-7279-0000	SWIVEL CLAMP ROD	1
16	03-7306-0000	TEE PIECE	1
17	03-7308-0000	AXLE - CR48,CR61	1
18	03-7658-0000	STARLOCK HUB CAP	2
20	04-3688-0000	20mm CONDUIT *NOT SHOWN*	43"
21	03-6926-0000	PIVOT BLOCK (L/H)	1
22	03-6925-0000	PIVOT BLOCK (R/H)	1
23	03-6929-0000	SILENT BEARING	2
FASTENERS			
39	00-0606-0171	M6 X 6 SKT SET SCREW S/COL	2
40	00-0500-0521	M5 INTERNAL SHAKEPROOF WASHER	6
42	00-0512-0013	M5x10 POZI PAN HEAD SCREW ST/ST	6
44	7CL003	M10 SPRING WASHER ST/ST	4
45	00-1030-0103	M10x30 CAP HD SCREW ST/ST	4
46	00-1200-0503	M12 WASHER FORM B ST/ST	1
47	00-1200-0713	M12 LOCKNUT ST/ST	1

Tacony CFC**Cyclone Range Tank Assembly****Part Reference: 05-4253-0000**

Date:	9/10/2009		
Machine:	CYCLONE RANGE MACHINES		
Reference Drawing Number:	N/A		
Modified By:	G SECHERE	DESCRIPTION OF CHANGE	ECN #
Revision:	C	INCREASE QTY OF #5 TO 6 & #8 TO 4	0135

Ref. No.	Part No.	Part Description	Qty
CORE COMPONENTS			
10	02-3278-0000	NEOPRENE ADHESIVE STRIP	4"
11	02-4179-0000	SILICON HOSE (CR TANK) 1.6M	63"
12	02-4212-0000	WATER OUTLET BRASS NICKEL	1
13	02-4213-0000	BALL VALVE	1
14	02-4360-0000	SCREW SELF TAPPER	4
15	03-3475-0000	1/4 INCH BRASS HEXNUT	2
16	03-7297-0000	WATER VALVE (BLUE)	1
17	03-7302-0000	SPRING LEE LC 0594 MWTO SPEC.ISS 01	1
18	03-7303-0000	SOLUTION TANK ROD	1
19	03-7304-0000	FOAM HANDLE PAD	1
20	03-7311-0000	TANK BRACKET TOP	1
21	03-7312-0000	SOLUTION TANK BRACKET LOWER	1
22	03-7661-0000	VALVEINSERT	1
23	03-7662-0000	FILTER (NYLON)	1
24	03-8178-0000	CR RANGE SOLUTION TANK	1
FASTENERS			
1	00-0300-0703	M3 FULL NUT ST/ST	2
2	00-0400-0503	M4 WASHER FORM 'A' ST/ST	4
3	00-0412-0013	M4 X 12 POZI PAN HEAD SCREW ST/ST	4
4	00-0500-0503	M5 WASHER FORM A ST/ST	2
5	00-0500-0521	M5 INTERNAL SHAKEPROOF	6
6	00-0500-0723	M5 NYLOC NUT ST/ST	1
7	00-0512-0033	M5 x 12 COUNTERSUNK SCREW ST/ST	2
8	00-0516-0013	M5 x 16mm POZI PAN HD SCREW ST/ST	4
9	00-0520-0013	M5 x 20 POZI PAN SCREW ST/ST	1

